

# DIRECTIONS TO **YOUR** VENUE...

## 70 Clifton Street, London, EC2A 4HB



**Welcome to the Training Room Hire Company!**

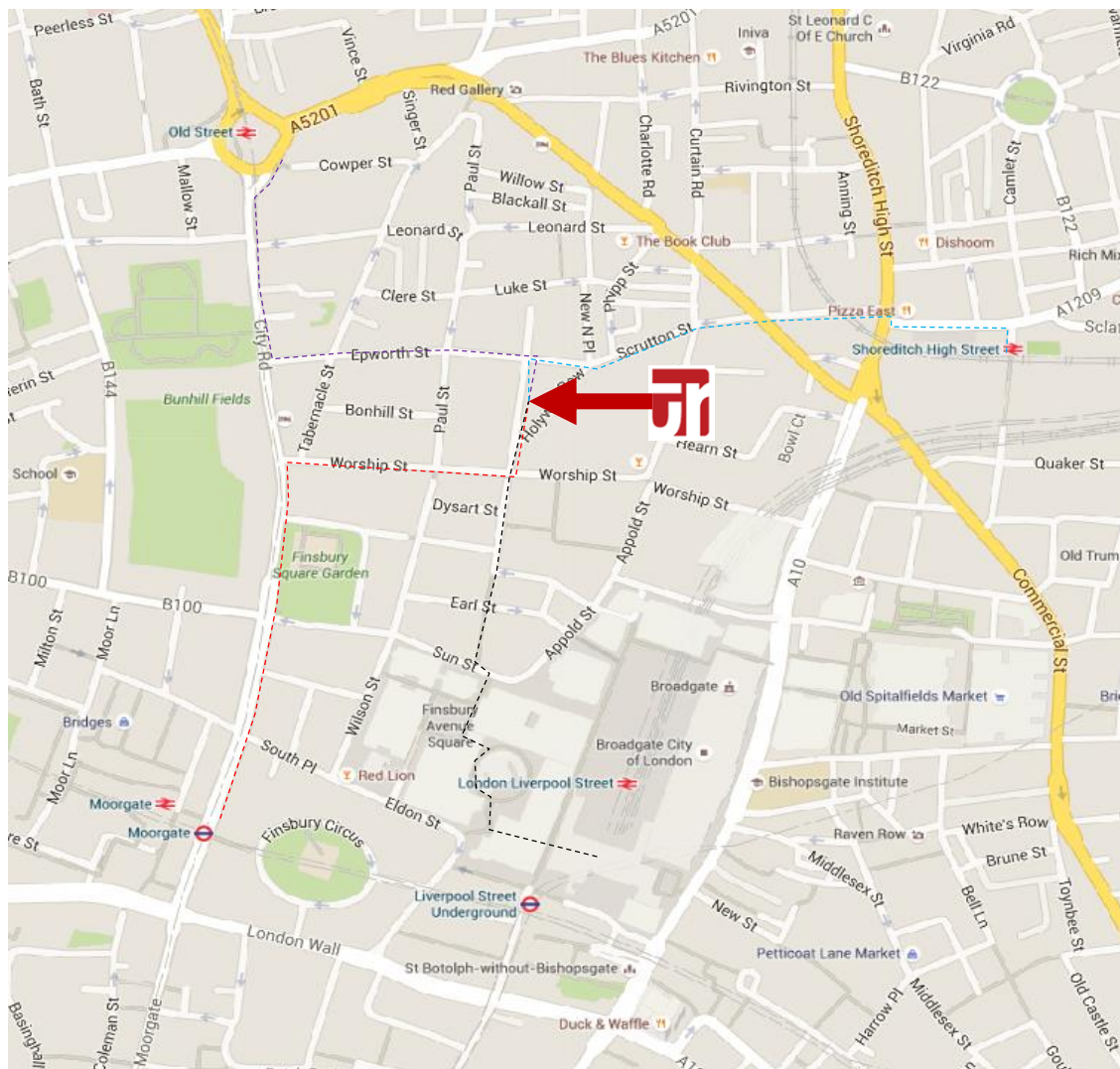
**We are really looking forward to meeting and welcoming you to our venue!**

Our venue is centrally and easily located between the City and the trend spot of Shoreditch.

The nearest train stations to get to us are **Liverpool Street, Moorgate, Old Street** and **Shoreditch High Street**; all between 05 to 10 minutes' walk away.

**There are a number of easy ways to get to us, so please find enclosed some detailed directions from the main stations to our venue for your convenience.**

If you have any issues at all, please do not hesitate to give us a call on **0207 407 6320**, and one of our team will happily assist you!



## from LIVERPOOL STREET STATION: (05-08 min walk)



TFL Rail

Central

Circle

Metropolitan

Hammersmith

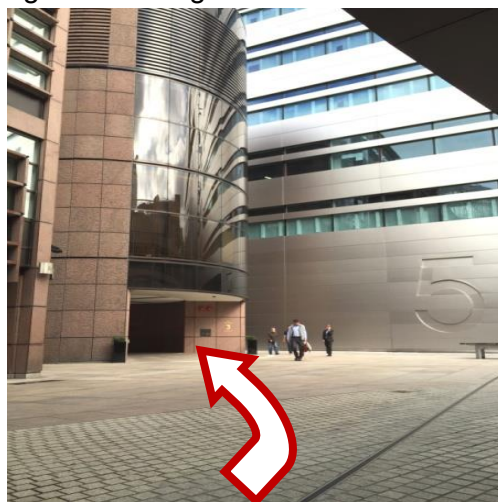
When leaving the mainline or underground platforms, head to the western side of the station **exiting via the Broadgate exit**, where 'The Merchant of Broadgate' would be on your left and 'Boots' would be on your right.



Upon exiting the station, you will see a tall iron structure directly in front of you, **veer right and walk up the set of steps**. At the top of the stairs, **veer left and walk around the plaza...**



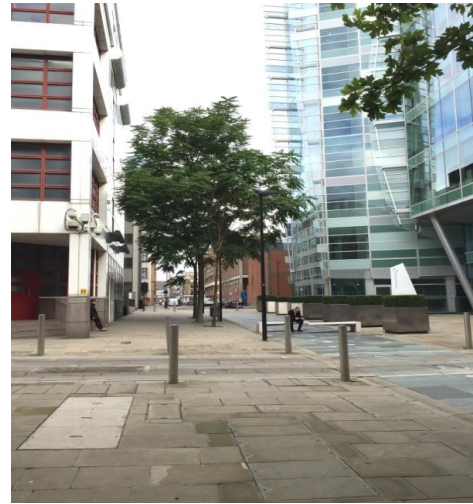
When you reach the building with the large 'number 5' on it in front of you, **veer to the left**.



You will then enter another plaza, when you do, **turn to the right and walk straight on...**



When you reach the end of the plaza, you will see a very large zebra crossing – **cross it and keep walking straight** on through the pedestrianised road. This is Clifton Street.  
Keep walking **straight on** for a further 3 minutes...



After the bollards; **keep walking straight** and you will see a large motorcycle park in the middle of the road, pass this, and our venue is (70 Clifton Street) and is located **on the right hand side**.



## from MOORGATE STATION: (07-10 min walk)



Northern

Circle

Metropolitan

Hammersmith

Upon leaving Moorgate underground stations, **proceed walking north up Moorgate itself**. 'Boots' and 'Mace' should be on your left, whilst 'Britannic House' and 'Pure' should be on your right.



Keep walking straight on; you will pass 'Lloyd's Bank' and 'All Bar One' on your left and 'Marks & Spencer' and 'GAP' on the right.



Keep **walking straight on**; passing a park green and NCP entrance on your right. Keep going whilst heading for the building with the dome on top of it, which is in front of you (circled).



Once you have reached the building with the dome, **turn right** into Worship Street and walk **straight on**.



You will approach a road a crossroads (Paul Street) – cross the road and **keep going straight** along Worship Street.



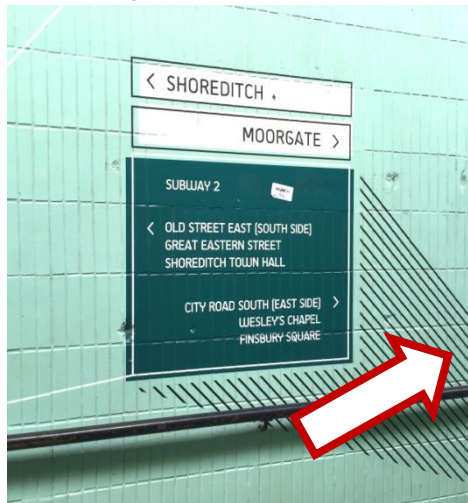
At the next road, you'll see a large motorbike stand to your left in the middle of the road – This is Clifton Street. **Turn left here** and the venue will be **on the right hand side** of the road, 70 Clifton Street.



**from OLD STREET STATION: (04-07 min walk)**



When leaving the stations ticket barriers, you will need to exit via **Subway 2** and towards **Moorgate**



At pavement level, **proceed straight on**, you will pass 'Pod' on your left. **Continue straight on** and you will also pass 'Sainsbury's' on your left, as well as 'Pret A Manger'. **Keep walking straight.**



When you come up to the castle-looking building on your right, **turn left** into Epworth Street.



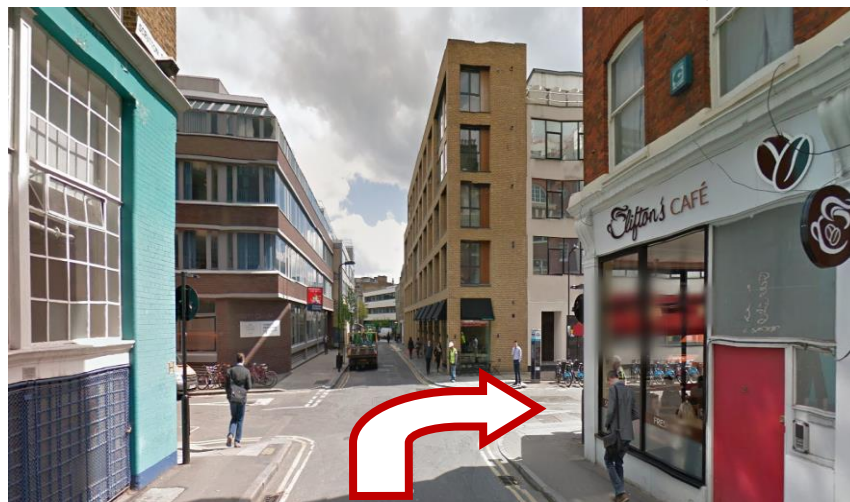
As you approach 'The Windmill' pub on your right, proceed **straight on** over the road.



Upon coming to the next crossroads, you will see 'The Fox' pub over the road on the left, cross the road and **keep proceeding straight on**.



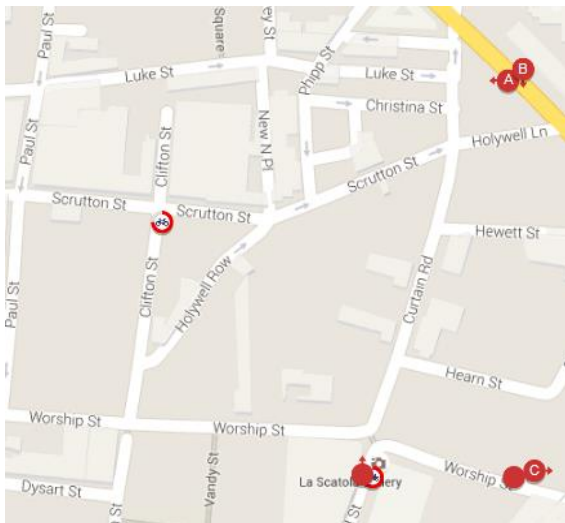
At the next crossroads, you will see 'Clifton's Café' on your right. **Turn right here** and the venue is located **on the left hand side**, number 70 Clifton Street.



## BY BUS:



The following buses are within a two minute walk away from our venue...



### Bus Stop A & B:

135 and 205

### Bus Stop C:

(toward Aldgate or Monument):

42 and 344

Please refer to local timetables for times or visit [www.tfl.gov.uk](http://www.tfl.gov.uk) for more information.

## BY CAR:

**There are no on-site parking facilities at the venue directly.**

The nearest NCP car park is located just 5 minutes' walk from the venue. Its address is: Finsbury Square, London, EC2A 1AD. You can pre-book via their website at: <http://www.ncp.co.uk/find-a-car-park/car-parks/london-finsbury-square/>

The area does have a street parking pay-and-display scheme. You can park in the area for 4 hours; however there is no return within 2 hours.

Please note that the venue is located within the London Congestion Charge, which operates from 07:00 to 18:00, Monday to Friday. You are advised to pay this to Transport for London before travelling to avoid any penalties.